

## TopSec 703+

### Reliable encryption of Euro-ISDN

- ◆ Encryption of voice, data, fax (group 4) and video conferences
- ◆ Encryption of connections to the TopSec GSM
- ◆ Transmission modes plain/encrypted
- ◆ Can be connected to Euro-ISDN S<sub>0</sub> interface
- ◆ Secure remote maintenance via Euro-ISDN
- ◆ Installation via plug&play
- ◆ Ease of operation and menu-guided administration



**ROHDE & SCHWARZ**

## Multifunctional use in Euro-ISDN encryption

Increased networking of business and private communications provides ideal targets for eavesdroppers and spies. As a result, there has been a dramatic increase in illegal attacks on telephone and data networks.

But how can you effectively protect communication against unauthorized intrusion?

The TopSec 703+ has been designed to protect communication via Euro-ISDN or in the GSM network against any eavesdropping attacks. It provides reliable encryption for the following basic services:

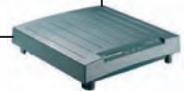
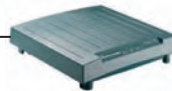
- ◆ Voice
- ◆ Data (ISDN only)
- ◆ Fax (group 4) (ISDN only)
- ◆ Video conferences (ISDN only)

## The "top secret" encryption unit meets highest demands

With the TopSec 703+, information can be exchanged via Euro-ISDN between two subscribers or between a subscriber in the Euro-ISDN and another in the GSM network without any risk. The only prerequisite is that the called station must be equipped with a partner device from the TopSec family.

## Specifications

Power supply	220 V, 50 Hz
Current drain	40 mA
Power consumption	9.2 VA (3.2 VA in standby mode)
Operating temperature	+5°C to +40°C
Storage temperature	-20°C to +70°C



One of the possible applications of the TopSec 703+: teleworking

Encryption is based on a hybrid method and carried out separately for the two B channels. To attain maximum security, a combination of two algorithms is used: an asymmetrical algorithm with a 1024-bit key for key agreement, and a symmetrical algorithm with a 128-bit key for data encryption.

In the encryption mode, the TopSec 703+ and the called station automatically agree on a new 128-bit key for each connection established. The 128-bit key is randomly determined from  $10^{38}$  possibilities and erased as soon as the communication is terminated.

## Tap-proof data transmission through plug & play

The TopSec 703+ is simply connected between the terminal equipment and the Euro-ISDN connector, and encrypts all information transferred via Euro-ISDN.

The transmission mode (plain or encrypted) is selected by adding a code number to the number of the called station. When data is transmitted, the communication partners only have to check the LEDs on their equipment to be sure that the information is transmitted confidentially.



Relative humidity	5% to 85%
Connectors	3 S <sub>0</sub> female
Dimensions (W x H x D)	180 mm x 45 mm x 173 mm
Weight (incl. plug-in power supply unit)	890 g

## Ordering information

TopSec 703+	3531.6504
-------------	-----------



**ROHDE & SCHWARZ**

Rohde & Schwarz SIT GmbH · Agastraße 3 · 12489 Berlin · Germany

Telephone +49 30 65884-223 · Fax +49 30 65884-184 · e-mail: info.sit@rohde-schwarz.com · Internet: www.sit.rohde-schwarz.com